

# HAMMERSMITH AND FULHAM HISTORIC BUILDINGS GROUP



## Newsletter

No.5 June 1998

### The Local List

The purpose of the Group is to protect local buildings of historic and architectural interest and to conserve their environment. The HBG began the laborious task of compiling a list of all such buildings in 1987, each as well documented as possible, including dates, architect and historical associations. The Local List has now grown to over 2,000 buildings, and the aim of the HBG is to complete the research and publish the definitive list by the Millennium.

A further development is to translate The Local list, together with the research on to a database. Listings will be available under both street names and categories, eg churches, schools and pubs, allowing easier more efficient access and making records accessible to a wider audience. Work has already started on the transferral. However in order for the HBG to complete this invaluable undertaking funds of £2,750 are needed.

### The Photographic Survey

An impressive photographic survey is being carried out - over 3,000 photographs have already been processed - providing photographic records to match the List, supplying visual evidence of historic buildings. A set of these is lodged with the Borough Archives at the Lilla Huset, Talgarth Road W6. The survey has proved so successful that the photographs have been displayed in small exhibitions and a larger one is planned. The survey will provide invaluable records of historic Hammersmith and Fulham at the end of the 20th century.

### Hammersmith Bridge

Hammersmith Bridge, a symbol of the Borough, and one of its most distinguished Listed Buildings, is currently being strengthened. Damage to the Bridge was originally caused by heavy goods vehicles using this route. In recent years this illegal traffic - vehicles over 7.5 tons - became a daily occurrence. The council is seeking views on whether the bridge should be reopened to general traffic, or whether the current level of limited use should continue. Information may be obtained from the hotline 0181 741 9949. The group's first concern is for the long term preservation and welfare of the bridge. Whatever the eventual outcome, weight limits must be enforced and policed in future.

### West London Hospital



*Saunders Building, West London Hospital*

The West London Hospital designed by George Saunders 1870-71. A demolition proposal and application to erect an undistinguished taller building in its stead have been refused by the Council whose site policy requires retention of the original Saunders building. Public inquiry at Hammersmith Town Hall June 30th, 1998. The group has always argued for the retention of the handsome original hospital building and its incorporation in any new development.

# HAMMERSMITH AND FULHAM HISTORIC BUILDINGS GROUP

## Conservation Areas Profiles

The Council is now drawing up an architectural and historic record with a character assessment of each of the Borough's Conservation Areas, entitled 'A Conservation Area Profile'. Detailed work has been carried out on the Profiles by the Conservation Area Working Party of the Historic Buildings Group in consultation with The Hammersmith Society, The Fulham Society, and the relevant local Residents' Associations. Of the 43 Conservation Areas 20 have already been covered. The Council has adopted 15 CA Profiles providing the whole of the Riverside (with the exception of Chelsea Harbour, which is not a CA) the added protection of a CA Profile. The first areas will soon be receiving their 'Advice to Residents' leaflet. These will be delivered to all households in the CA. The detailed versions of the St. Peter's, The Mall and Fulham Reach Profiles are now available from The Council's Reception Planning Department - price £3.50, or by post on receipt of payment.

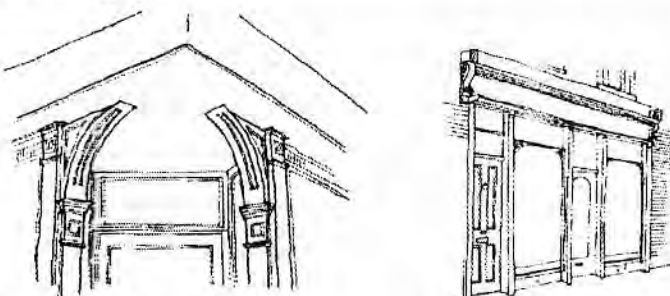
In order to complete this work each street in an area had to be 'walked' and studied in detail during the course of which a number of additional buildings were discovered and will be added to the HBG Local List.

As a result of this in-depth study various matters of general principle were highlighted. A few examples are:

### Street Furniture

The lack of a consistent design policy for street furniture and highway schemes - HBG is pressing the council to adopt English Heritage guidelines on highway schemes and street furniture.

### Old Shop Fronts



Details of original shop fronts

The importance of preserving the few remaining old shop fronts for their historical value and their contribution to the local character. The HBG has asked the council to draw up a design brief for shop fronts.

### Maintenance of open spaces

The need for better maintenance of parks and open spaces in the Borough, particularly the riverside and Riverwalk.

### Broad Design Guidelines

Each CA Profile has a final section which is virtually standard to all the CA's called 'Broad Design Guidelines'. The Group hopes that the extensive, detailed work carried out, describing the importance of correct detail and materials will have a beneficial effect on alterations within the Borough's CA's.

### Pubs



The Swan

The historic character and the old names of pubs in the Borough are being lost to the current nationwide trend of 'branding'. A hard won victory has resulted in the retention of the Swan signs at the Swan at Hammersmith Broadway, the plasterwork and the mosaic swan. Discreet notices in the downstairs window now display the new name. However this was only achieved as the Swan was listed. Elsewhere the group has argued strongly for the retention of signage and a 'History Board', recording the age of the pub and its original name.

# HAMMERSMITH AND FULHAM HISTORIC BUILDINGS GROUP

At present the council has no power to refuse a name change, however, bizarre eg The Three Kings, corner of Talgarth Road and North End Road which has been renamed the Via Fossa. (No, the Foss Way did not run along either of these roads!)

## The Thames

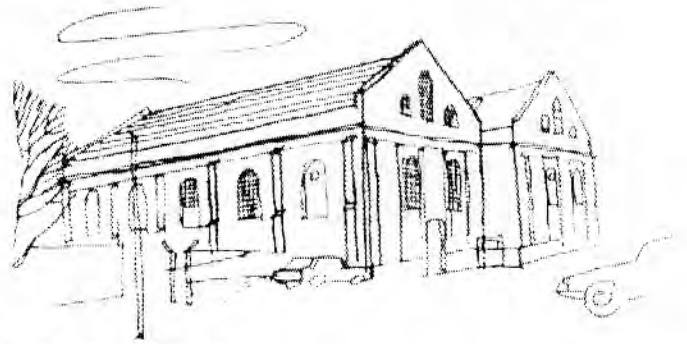
The HBG together with the Hammersmith Society was instrumental in setting up the West London River Group. Amenity Societies on both banks of the Thames from Kew to Chelsea are working to secure a Landscape Survey from Kew to Chelsea along the line of the much admired one from Hampton to Kew. This stretch of the river has been described in The Thames Strategy as being of 'domestic scale' and 'semi-rural'. You have only to look across from the river to Barn Elms and the Harrods Depository to realise that prompt action is essential to ensure that this semi-rural stretch, which is the setting for some of the Borough's most distinguished Listed Buildings, is protected from irreversible urbanisation.

## Schools

A number of fine schools, built when the population was expanding, exist in the Borough. Many are now surplus to educational requirements and the Borough's policy is to sell the sites to Housing Associations to provide affordable housing. Unfortunately only the listed Victoria Junior School in Becklow Road has been converted. The following have been lost to demolition: Sherbrook School, Hawkmore School, Harwood School, St Marks School, Ackmar Road, and now Beaufort House School in Lillie Road. There are very real fears for others.

## Individual Buildings Causing Concern

**The Dimco Building** White City, originally an electricity generating station for the Central London Railway built 1898-99. This is due for restoration to be used for leisure in the White City redevelopment scheme. The HBG is concerned it may be crowded in and overshadowed by the new development.



*Dimco Building, White City*

**The White City Arch** Shepherds Bush Green was designed by Imre Kirally as the original entrance to the Franco British Exhibition of 1908. The HBG is very concerned that it should be suitably restored. It now stands a pale shadow of its former self, missing cupolas and decoration.

**Imperial Gasworks Site** Sands End. The survey for the Sands End CA profile revealed interesting industrial remnants of The Imperial Gas Light and Coke Company eg the dock, the original office building, and the magnificent Victorian walls. The HBG awaits the details of the new scheme and will argue forcefully for the retention of these historic remnants.

## English Heritage At Risk Register 1998

The new At Risk Register contains the following buildings in Hammersmith and Fulham

Crowthers, 282 North End Road a large early 19th century dramatic classical stuccoed house now used in part as a market and in great need of repairs.

11 Stamford Brook Road, W6. A mid 19th century semi-detached house in need of repair

Dimco Machine tools former generating station, Wood Lane W12. see above.

Monuments at St Mary's Cemetery, Harrow Road W12. The Group has recently inspected this cemetery and is alarmed at the poor condition of the older monuments including four listed memorials.

Sussex House, 12-14 Upper Mall W6. It is extraordinary that this beautiful and desirable house should be in the reported bad condition.

Royal Masonic Hospital - now with a new owner and set to become the Stamford Hospital

116 Fulham Palace Road, 1905 Arts & Crafts ex Nurses Home. Permission now given for use as a nursing home.



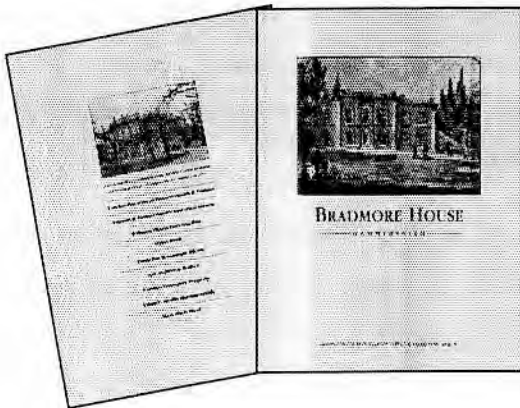
## Bradmore House

The campaign to save Bradmore House from destruction was the HBG'S first major success. The Group has published a beautifully illustrated booklet about Bradmore House, which is a fascinating story. The Booklet is on sale at £3.50 and may be obtained from the following:

**Hammicks**, Kings Mall, W6.

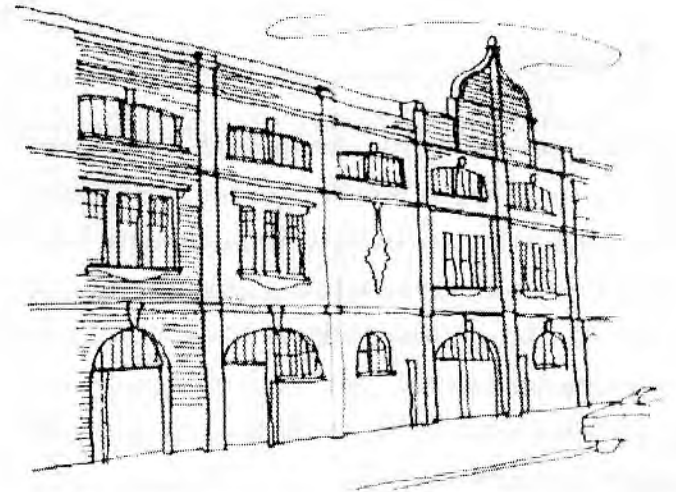
**Efficient Stationers**, 3-4 King Street W6

or by post from **The Chairman**, 31 St Peter's Square, W6 9NW plus £1.50 P&P.



## Fulham Football Club

The HBG hopes the long awaited restoration of the listed Stevenage Road Stand and the turnstiles will start soon. This is the only listed football stand in the country and should be cherished. It has been neglected too long.



Stevenage Road Stand

## Stop Press

### The Swan Public House

The group is alarmed to see that the swan signs have recently been removed and replaced with a brand sign. This has won the brewers a nomination for the Hammersmith Society's Wooden Spoon Award. We trust the brewers will replace the old pictorial Swan signs as soon as possible.

### Frank Dale and Stepsons 120 124 King Street 1904.

The Old Plough and Harrow Public House, a flamboyant Edwardian 'Drinking Palace' demolition refused. A Public Inquiry is to be held. The HBG argues for its restoration on the present site as part of any new development.

### 'Fulham Centre' - Jeran Place & Vanston Place

Application withdrawn watch this space!.

Editor: Daniel Garnett, 25 St Peters Square, W6 9NW

Editorial Contributions welcomed. Contributors should submit copy to the editor at the above address or on Fax No 0181 746 3673

## HAMMERSMITH AND FULHAM HISTORIC BUILDINGS GROUP

I should like to join the group and enclose my annual subscription (minimum £5) £ \_\_\_\_\_

I should like to make a donation of £ \_\_\_\_\_

Please send me ..... copies of The Bradmore House booklet at £5 which includes Postage and Packing. £ \_\_\_\_\_

**Total £** \_\_\_\_\_

Name: \_\_\_\_\_

Tel No: \_\_\_\_\_

Address: \_\_\_\_\_

Postcode: \_\_\_\_\_

Please Send to: The Treasurer: John Putnam, 44 Ranelagh Gardens Mansions, Ranelagh Gardens, London. SW6 3UQ

## appeal

The Hammersmith and Fulham Historic Buildings Group was formed in 1987 to work for the preservation and enhancement of the Borough's Historic Buildings and its numerous Conservation Areas.

The HBG has compiled a local list of over 2000 Historic Buildings, including the nationally Listed Buildings, our own Borough's Local Register of Historic Buildings (an HBG idea now being taken up by our neighbours in Hounslow) and other buildings worth preserving. This list includes research on each building with dates and architects together with any other interesting details like famous former occupants.

The HBG has done a Photographic Survey of these buildings involving over 3000 photographs so far. A set of these photographs is deposited with the Borough Archive department so that everyone can have access to them.

The HBG Conservation Area Working Party in consultation with the Hammersmith Society or the Fulham Society studies every draft Conservation Area Profile and comments in detail. So far we have worked on 20 out of the 43 Conservation Areas in the Borough. The council has adopted almost all of our many detailed suggestions.

The HBG was instrumental in the preservation of the Listed early 18th century facade of Bradmore House on the west side of the Hammersmith Broadway development. It is now restored as part of a new building occupied by Deal's Restaurant. 1996 the HBG published a booklet on the history, architecture and restoration of Bradmore House with financial assistance from the council and local businesses.

The HBG is consulted by the council on planning applications for Historic Buildings and Conservation Areas. and makes representations to Government and other national bodies on matters concerning Historic Buildings and Conservation Areas.

**£2,750 needed to complete and publish our research**



For more information: contact the Chairman, Angela Dixon, 31 St Peter's Square, London W6 9NW

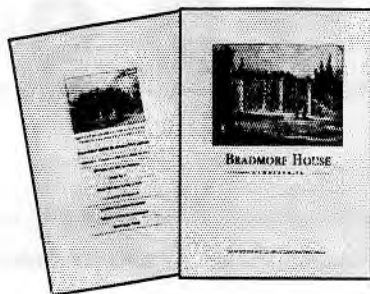
Tel: 0181 748 7416

To join or help please see over

# THE HAMMERSMITH AND FULHAM HISTORIC BUILDINGS GROUP

gratefully acknowledges the following financial support:

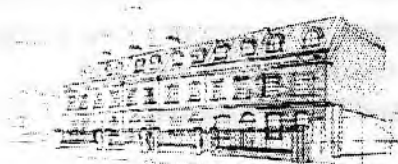
## For the Bradmore House Booklet



London Borough of Hammersmith & Fulham  
Fulham & Hammersmith Historical Society  
Willmot Dixon Construction  
Hypo Bank  
Deals Bar Restaurant Diners  
epr architects limited  
London Transport Property  
Labatt's Apollo Hammersmith  
Marc Fitch Fund

## For the Photographic Survey of the Borough's Historical Buildings

Citibank Consumer Services Ltd  
Polygram UK Ltd  
United Distillers Ltd  
George Wimpy PLC



## £2,750 needed to complete and publish our research

The HBG is now appealing for £2,750 to enable us to finish and publish our research in a professionally produced book in time for the Millennium.

Then all the information will be available for everyone.

See below for details of how to join The HBG.

Practical help is also very welcome.

---

## HAMMERSMITH AND FULHAM HISTORIC BUILDINGS GROUP

I should like to join the group and enclose my annual subscription (minimum £5) £ \_\_\_\_\_  
I should like to make a donation of £ \_\_\_\_\_  
Please send me ..... copies of The Bradmore House booklet at £5 which includes Postage and Packing. £ \_\_\_\_\_  
**Total £ \_\_\_\_\_**

Name: \_\_\_\_\_

Tel No: \_\_\_\_\_

Address: \_\_\_\_\_

Postcode: \_\_\_\_\_

Please Send to: The Treasurer: John Putnam, 44 Ranelagh Gardens Mansions, Ranelagh Gardens, London. SW6 3UQ